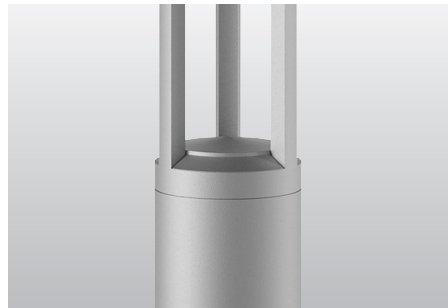


LED BOLLARD LIGHT 10W - SERIES H
PRODUCT OUTDOOR



LED BOLLARD LIGHT 10W

SPECCIFICATION



SPECCIFICATION

- Order Code: BH010
- Input Voltage: 24VDC, 220V
- Dimension: Ø150xH900 mm
- Chip LED: CREE
- Power consumption: 10W
- Lumen Output: 900 lm
- Material: Aluminium
- Efficiency: 90%
- Environment temperature: from -30° to 60°C
- Color[CRI]: 3000K, 4000k, 5000k
- Beam angle: 360°
- IP Rating: IP67
- Impact Resistance IK: IK09
- Life time: 50.000 hour
- Control: ON/OFF, DIM 0 - 10V, DALI, DMX512
- Standards:
 - + RoHS; EMC protection
 - + IEC 62031LED
 - + IEC 60598 Luminaires

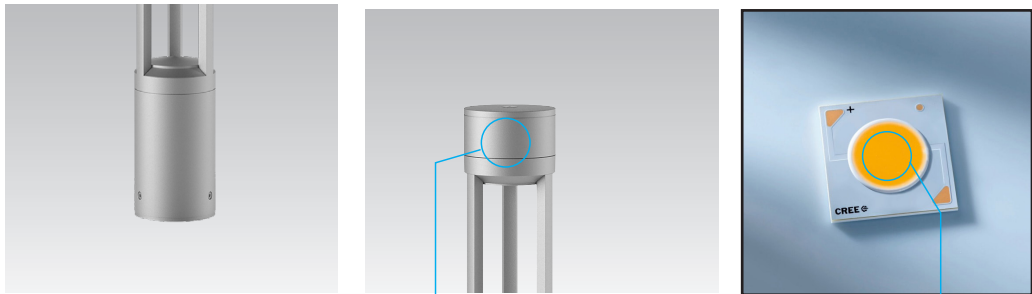


LED BOLLARD LIGHT 10W

TECHNICAL DETAILS

TECHNICAL DETAILS

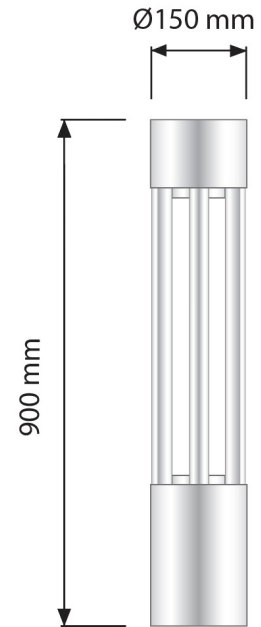
Lens



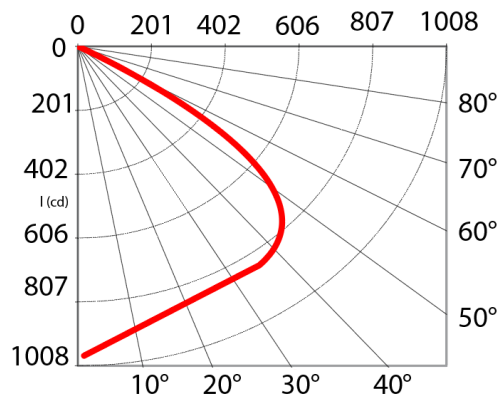
Stainless steel

Chip LED CREE

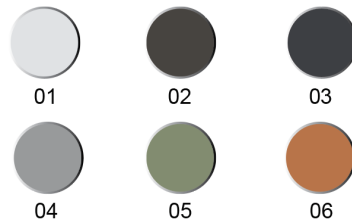
DIMENSIONS



DIAGRAMS

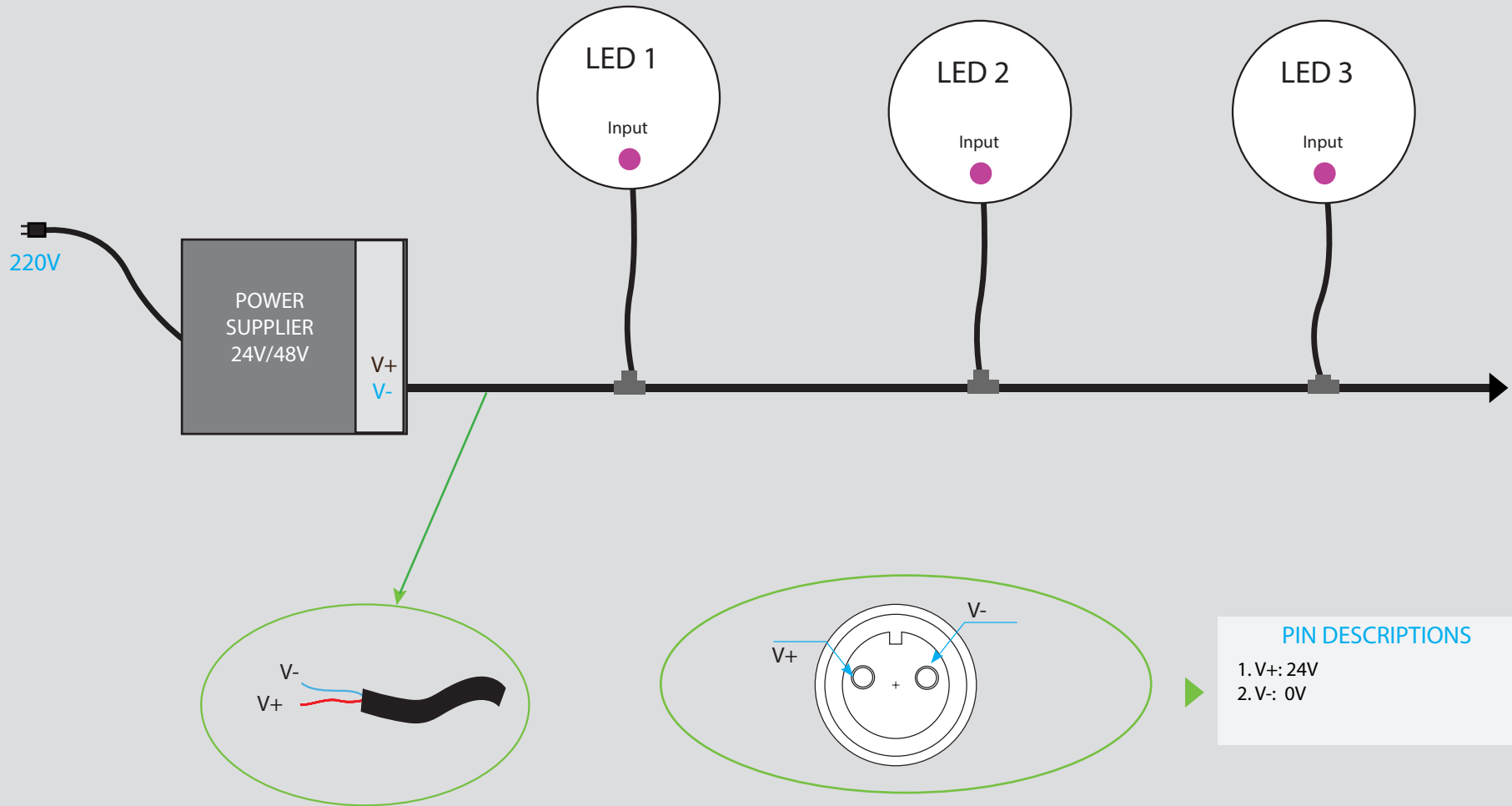


Select Color XX



LED BOLLARD LIGHT 10W

POWER SUPPLIES - INPUT VOTAGE



LED BOLLARD LIGHT 10W - Applications



OUTDOOR



LANDSCAPE



HOTEL/RESTAURANT

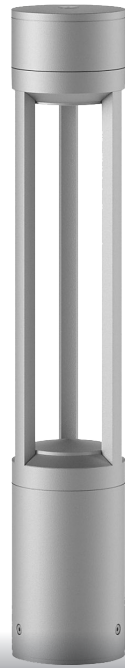


FACADE BUILDING



LED BOLLARD LIGHT 10W - Applications





THANKS FOR YOUR
ATTENTION