

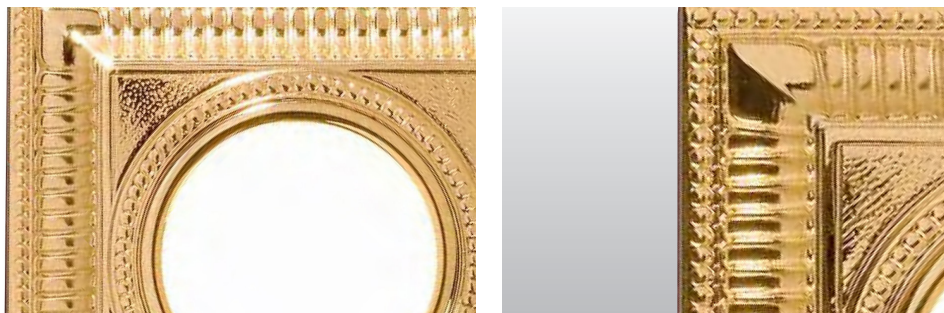


LED DOWNLIGHT 10W - SERIES E2  
PRODUCT INDOOR



# LED DOWNLIGHT 10W

## SPECIFICATION



## SPECIFICATION

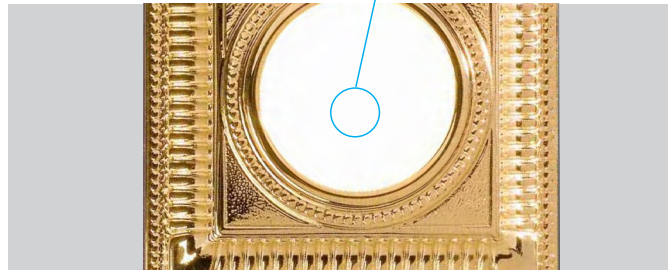
- Order Code: DE2010
- Input Voltage: 24Vdc, 220Vac, Dimmable
- Dimension: L100xW100xH70 Cutout Ø72 mm
- Chip Leds: CREE
- Power consumption: 10W
- Luminous Flux: 900 lm at 3000K, 10W, CRI>90, 36°
- Material: Aluminium
- Efficiency: 90%
- Environment temperature: from -30° to 60°C
- Color[CRI]: 3000K, 4000K, 5000K, RGBW
- CRI: > 90
- Beam angle: 12° 24° 36° 50°
- IP Rating: IP44
- Life time: 50.000 hours
- Control: ON/OFF, DIM 0 - 10V, DALI, DMX512
- Standards:
  - + RoHS; EMC protection
  - + IEC 62031LED
  - + IEC 60598 Luminaires



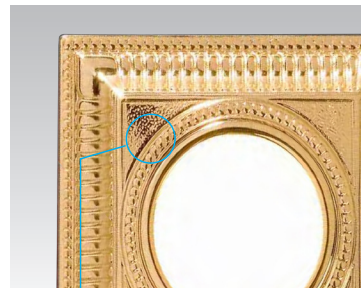
# LED DOWNLIGHT 10W

## TECHNICAL DETAILS

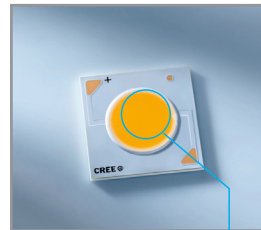
### TECHNICAL DETAILS



Lens

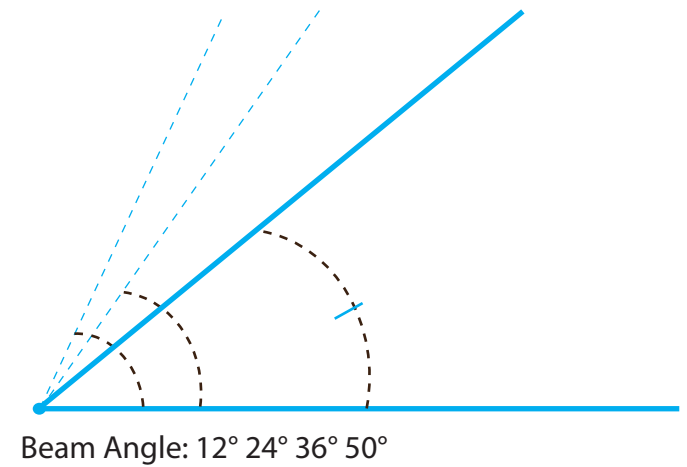
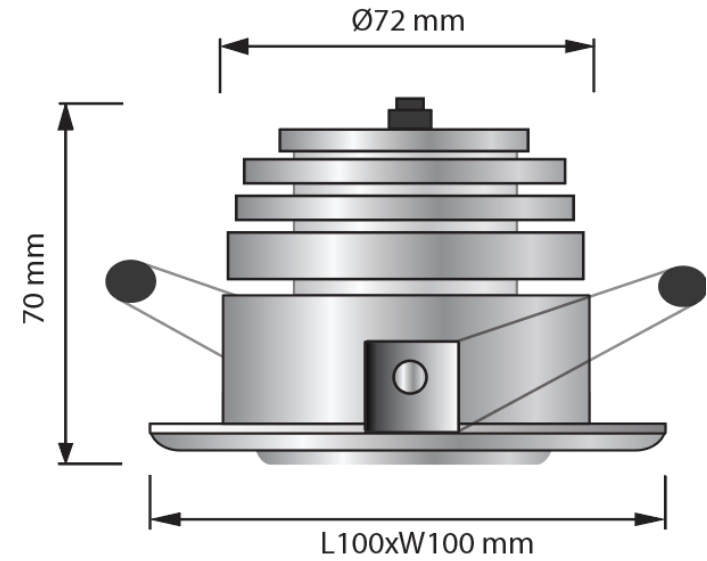


Aluminium



Chip LED CREE

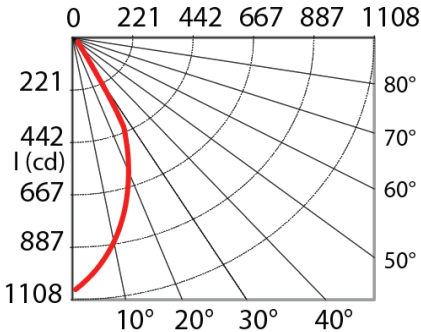
## DIMENSIONS



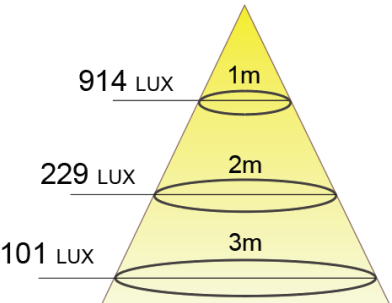
# LED DOWNLIGHT 10W

## SPECIFICATION

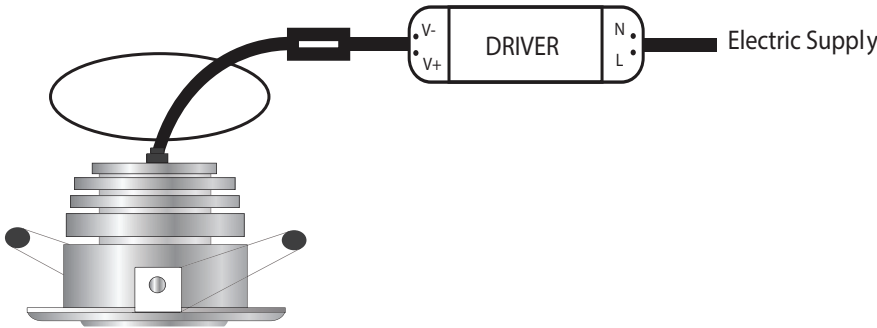
PHOTOMETRIC CURVE



BEAM 36° AMPLITUDE DIAGRAM



## INSTALLATION



# LED DOWNLIGHT 10W - Applications



INDOOR



TRANSPORT



HOTEL/RESTAURANT



# LED DOWNLIGHT 10W - Applications





THANKS FOR YOUR  
**ATTENTION**